

SWITCH Sensor HF 5BP

Automatic switching based on motion and light level



Product description

- _ Motion detector for luminaire installation
- _ Motion detection through glass and thin materials (except metal)
- _ For automatic on/off switching of electronic ballasts
- _ Bright-out function: luminaire is not switched on if there is adequate brightness
- _ Delay time, detection range and light value for the bright-out function can be set via 3 potentiometers
- _ Max. installation height 5 m
- _ Infinitely variable range (0.5 – 5.0 m)
- _ 5-year guarantee

Website

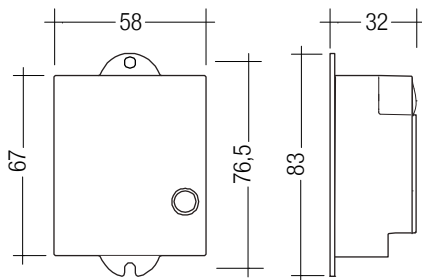
<http://www.tridonic.com/28000086>



SWITCH Sensor HF 5BP

Automatic switching based on motion and light level

The complete data sheet for this product is available in the Downloads section.

**Ordering data**

Type	Article number	Dimensions L x W x H	Packaging, carton	Weight per pc.
SWITCH Sensor HF 5BP	28000086	83 x 58 x 32 mm	4 pc(s).	0.077 kg

Technical data

Rated supply voltage	230 – 240 V
Mains frequency	50 / 60 Hz
Power	< 0.5 W
Detection angle	160°
Transmission power	1 mW
Ambient temperature t_a	-20 ... +75 °C
Storage temperature t_s	-20 ... +75 °C
Humidity	min. 5 % ... max. 85 % at 30 °C
Type of protection	IP20
Housing material	PC, halogen-free
Housing colour	RAL 9016

Approval marks**Standards**

EN 61347-1, EN 61347-2-11, EN 61000-4-4, EN 61000-4-5, EN 60669-2-1

Specific technical data

Type	Dimensions L x W x H	Detection			Output, relay (L)	
		Detection angle	Transmission power	Frequency	L' (switched line)	Switching output Cat 240 V AC max. ^①
SWITCH Sensor HF 5BP	83 x 58 x 32 mm	160°	1 mW	5.8 GHz	220 – 240 V	1,000 W / 4 A (ohmic load)

① Inductive: 500 VA, $\cos \phi > 0.5$; capacitive: max. 2 ECG (à 54 W, max. 50 F); inrush current: max. 160 A / 200 s; up to 100.000 switching cycles.