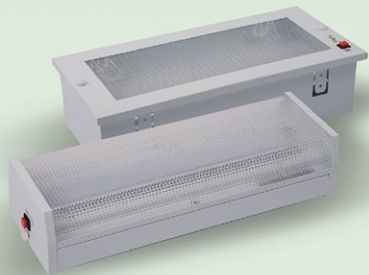


SHINZ[®]

Innovating Future



A NEW AGE OF
EMERGENCY
ENLIGHTENMENT
SE-20 , 20R

LiFePO₄



SE-20 / 20R

ORDERING DETAILS



SE-20
SURFACE MOUNT
0.9 Kg/Unit
10 Units/Carton



SE-20R
RECESSED MOUNT
1.6 Kg/Unit
6 Units/Carton

SURFACED AND RECESSED

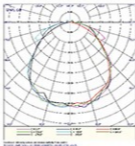
- The SE-20 Fittings are constructed using Epoxy powder coated galvanized steel sheets. It is suitable for any retrofit or new installations. The Shinz certified Push-To-Test Switch and Solid State Electronic Automatic charger ensures seamless switch over during supply interruption.
- The **SHINZ** SE-20 Emergency Lighting range has the Non-Maintained Operation mode that comes with High Temperature Sealed Lithium Iron Phosphate (LiFePO₄) Batteries to back up with duration of more than 3 hours tested based on both safety (IEC62133) and performance (IEC 61960).
- It is Designed , Tested and Manufactured to meet the **"NEW"** requirement of **MS 619-2-22:2005** & **MS IEC 60598-2-22:1997**.



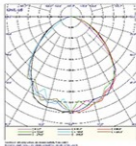
TECHNICAL CHARACTERISTIC

Mode of Operation	: Non-Maintained
Input Voltage	: 240~ VAC, 50 Hz
Lamp Type	: 20 x 0.1W SUPER BRIGHT LED
Lamp Output	: SE-20 (109 lumens) , SE-20R (74 lumens)
Input Current	: 0.03A
Power Factor	: 0.3
Charger	: Solid State Electronic Automatic
Charger Monitor	: Red LED
Test Facility	: Push-To-Test Switch
Battery Type	: High Temp. Sealed Lithium Iron Phosphate (LiFePO ₄)
Back Up Duration	: 3 Hours
Operating Temperature	: ta 35°C
Weight	: (SE-20 0.9KG) & (SE-20R 1.6KG)
Mounting	: Surface / Recess
Degree of Protection	: IP 20
Fitting Construction	: Electro Galvanised Steel Sheet with Epoxy Powder Coating
Warranty	: 2-5 Years (Terms & Conditions Apply)

PHOTOMETRIC



SE-20



SE-20R

DIMENSIONS



SE-20



SE-20R

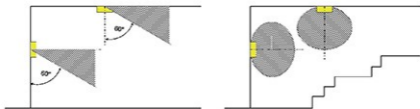
DATA SHEET EMERGENCY LIGHTING

	SE-20	SE-20R
Lamps Module	: 20x0.1w	: 20x0.1w
Luminous flux	: 123 lm	: 81 lm
Correction Factor	: 1.000	: 1.000
Emergency lighting factor	: 1.00	: 1.00
Emergency lighting luminous flux	: 123 lm	: 81 lm
Light output ratio	: 96.2	: 98.97

GLARE VALUATION (Maximum Luminous Intensity [cd])

	SE-20			SE-20R		
	C0	C90	C0 - C360	C0	C90	C0 - C360
Gamma 60° - 90°	19.1	15.3	20.9	6.7	11.2	11.6
Gamma 0° - 180°	42.2	41.2	43.2	35.4	35.7	36.7

SE-20 & SE-20R



Distance table for even escape routes

SE-20

Mounting Height [m]					
2.00	2.47	6.30	6.20	6.17	2.43
2.50	2.65	6.66	6.67	6.67	2.57
3.00	2.66	7.08	7.08	7.00	2.61
3.50	2.62	7.44	7.35	7.23	2.57
4.00	2.48	7.60	7.45	7.35	2.38

SE-20R

Mounting Height [m]					
2.00	2.18	5.28	5.34	5.54	2.24
2.50	2.34	5.92	5.87	5.98	2.35
3.00	2.41	6.32	6.26	6.32	2.36
3.50	2.28	6.59	6.50	6.51	2.28
4.00	1.91	6.76	6.62	6.55	1.96

The spacing table is based on the following parameters:

- Light loss factor: 0.72
- Emergency lighting factor: 1.00
- Minimum illuminance on center line: 1.00 lx
- Minimum illuminance on half of escape route width: 0.50 lx
- Diversity on the center line max. 40 : 1
- Width of escape route: 2.00 m



Shinz Global Sdn Bhd (1085402-M)

No5, Jalan BPU 8, Bandar Puchong Utama,
47100 Puchong, Selangor Darul Ehsan, Malaysia.

Tel : +6 03 5879 0388
Fax : +6 03 5879 0688
Email : shinzglobalchannel@gmail.com
ewest.acc@gmail.com

www.shinzglobal.com

 [Shinz Global S/B](#)