

SURIA/SL

EY623

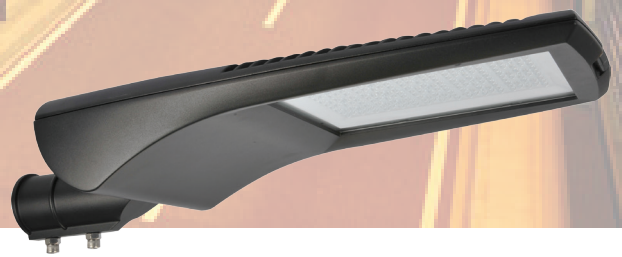
LED STREET LIGHT



EY623 • 30W • 60W



EY626 • 80W • 100W • 120W



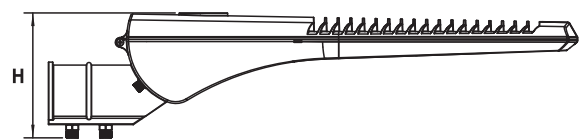
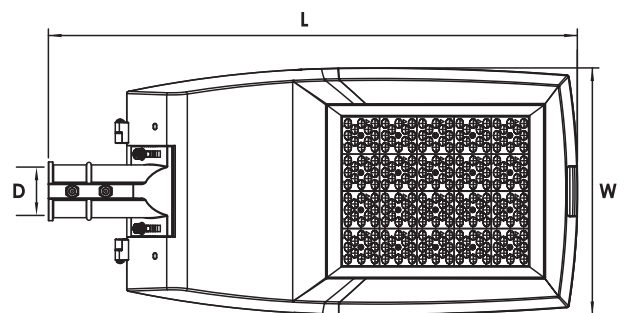
EY626 • 150W • 165W

### PRODUCT FEATURES

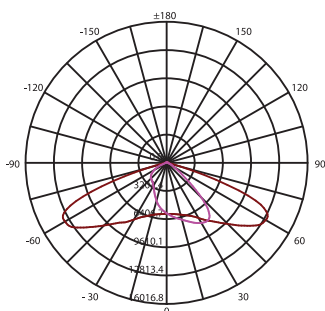
- The high lumen output LED array, provides even lighting from high mounting height
- Tool-less access to lamp compartment for easy maintenance
- ADC 12 high pressure die-cast aluminium body construction for strength and durability
- The IP66 rated sealed fixtures protect it from ingress of water and dust in harsh outdoor environment
- High efficiency with trusted and reliable LED component

### PRODUCT DIMENSION

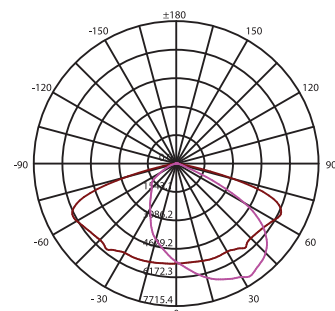
\*Typical dimension in mm



### PHOTOMETRY/BEAM ANGLE



Type II



Type III

# TECHNICAL DATA

NEW

CE

IP66

IK08

TOOL-LESS

LED STREET LIGHT

MODEL NO.	EY623-30W	EY623-60W	EY623-80W	EY623-100W	EY623-120W	EY623-150W	EY623-165W
Power Consumption ±5% (W)	30W	60W	80W	100W	120W	150W	165W
Luminaire Flux ±5% (lm)	4,050 lm	8,100 lm	10,800 lm	14,000 lm	16,200 lm	20,250 lm	22,275 lm`
LED Driver Model	SS-40V-54	SS-60V-42	SS-80V-42	SS-100V-38	SS-120V-38	SS-150V-38	SS-200V-38
System Efficiency ±5% (lm/W)	135 lm/W	135 lm/W	135 lm/W	140 lm/W	135 lm/W	135 lm/W	135 lm/W
Power Factor (PF)	0.95	0.95	0.95	0.98	0.98	0.98	0.98
Efficiency TYP. (%)	89.00%	90.00%	91.00%	91.00%	92.50%	92.50%	92.00%
LED Chips Quantity	36	72	96	144	144	192	240
HID Equivalent	70W	150W	250W	250W	250W	400W	400W
Spigot Mounting Hole, D (mm)	50	50	60	60	60	60	60
Product Dimension (mm) L x W x H	527 x 231 x 135	527 x 231 x 135	636 x 292 x 142	636 x 292 x 142	636 x 292 x 142	711 x 332 x 168	711 x 332 x 168
Net Weight (kg)	3.86	3.92	6.20	6.40	6.40	8.28	8.28
Gross Weight (kg)	4.44	4.50	7.02	7.28	7.28	9.30	9.30
Carton Dimension (mm) L x W x H	575 x 280 x 175	575 x 280 x 175	680 x 345 x 200	680 x 345 x 200	680 x 345 x 200	765 x 385 x 215	765 x 385 x 215
CBM (m <sup>3</sup> )	0.028	0.028	0.047	0.047	0.047	0.063	0.063

Note: The above specified lumen and system efficiency based on standard CCT: 6000K

## TECHNICAL SPECIFICATION

### ELECTRICAL SYSTEM

- **Input Voltage** : 100 - 240Vac, 50/60Hz, PF > 0.95
- **Insulation Class** : Class I
- **LED Driver** : SOSEN IP67
- **Additional Surge Protection Devices** : SS SPD for 30W and 60W  
SP01 (10kA) for ≥ 80W

### LIGHT SOURCE / OPTIC

- **LED Type** : SMD 3030 with TM21 and LM80
- **Color Temperature (CCT)** : Standard 6000K (3000K, 4000K & others upon request)
- **Color Rendering Index (CRI)** : Ra > 70 (Ra > 80, 90 upon request)
- **Life Time Residual Flux** : (L70), >50,000 hours @ Ta: 40°C
- **Optical System** : PC Lens with Tempered Glass Cover
- **Working Temperature** : Ta : -30°C to +50°C

### APPLICATION

- Road & Highway • Urban Road & Streets • Residential Streets
- Car Parks • Parks • Riverside • Jogging Track

### CERTIFICATION AND COMPLIANCE TEST

- **Type Test Compliance (Luminaire)** : EN 60598-1, EN 60598-2-3  
EN 62493, IEC/TR 62778
- **EMC Compliance** : EN 61000-3-2, EN61000-3-3  
EN 55015, EN 61547
- **LED Compliances Test** : IESNA LM-80  
TM-21
- **Ingress Protection Test** : IEC 60529 (IP66)
- **Impact Resistance Test** : IEC 62262 (IK08)

### FIXTURE/HOUSING

- **Ingress Protection (IP)** : IP66
- **Impact Resistance (IK)** : IK08
- **Housing Material** : ADC 12 Die-Cast Aluminium
- **Housing Finish** : Akzo Nobel Epoxy Powder Coating - Black

### OPTIONAL FEATURES/ACCESSORIES

- Motion Sensor, NEMA Photocell
- NEMA IoT Smart System
- Backlight Control



\* New Product Delivery : 8 -10 weeks upon PO confirmation